

# TRACKLAYER

The Tracklayer is a multifunctional device for lifting, transporting and laying very long and heavy track and switch sections.

With the Tracklayer, track construction is also possible on single-track lines. In combination with switch transport wagons, this results in a very efficient renewal method for switches.

The caterpillar crawlers allow an almost unlimited working area, independent of rails and trackbed.

Thanks to additional telescopic support legs, all movement maneuvers can be performed without putting down the load.

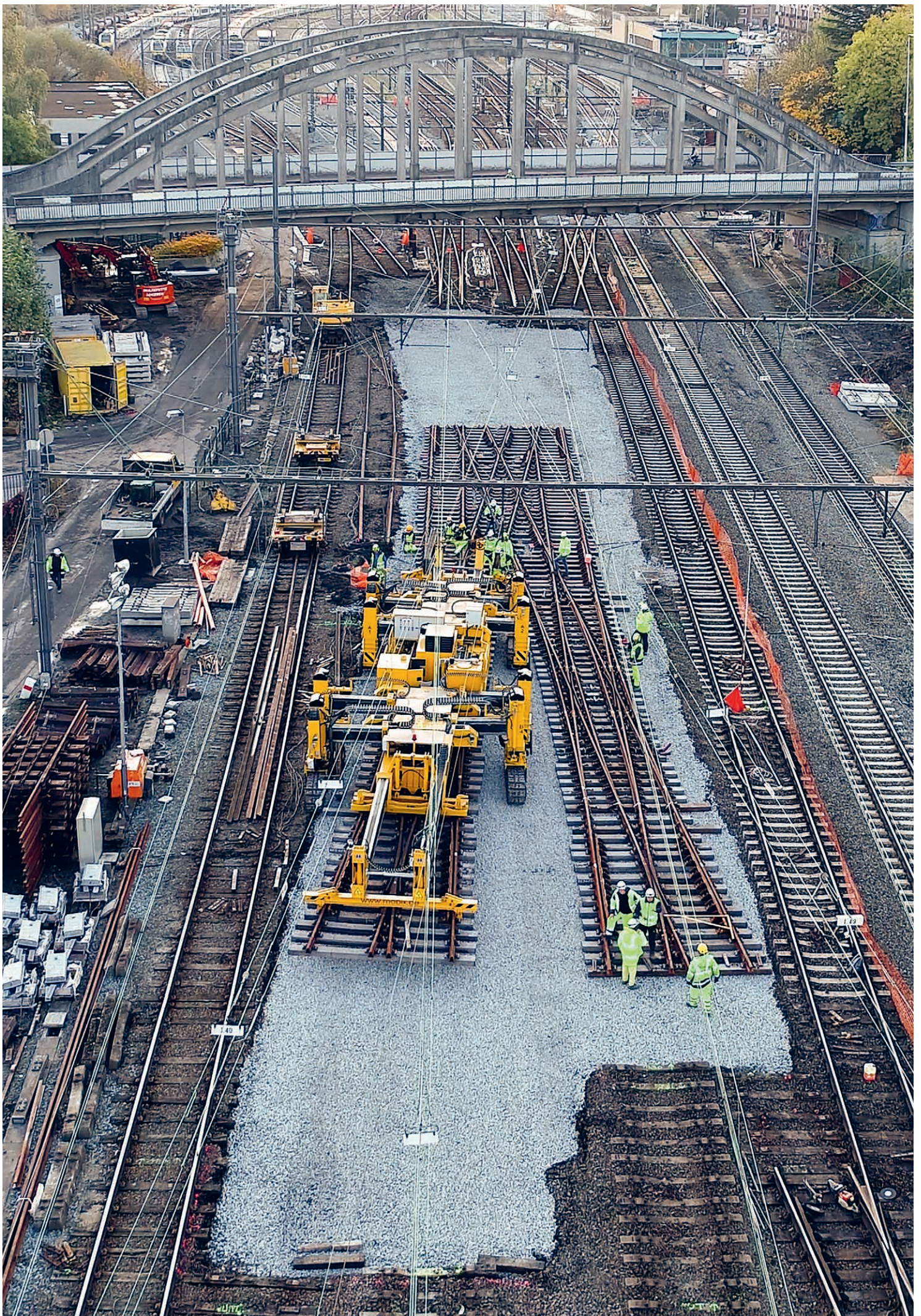
The switch part is gently lifted and fixed under the machine during transport without tension or torsion. Gentle handling and precise laying extend the service life of the turnouts and help to reduce lifecycle costs.

Remote-controlled motorized trolleys on which the Tracklayer can be moved together with the switch section enable fast and uncomplicated transport over longer distances even in dense infrastructure, e.g. station areas.

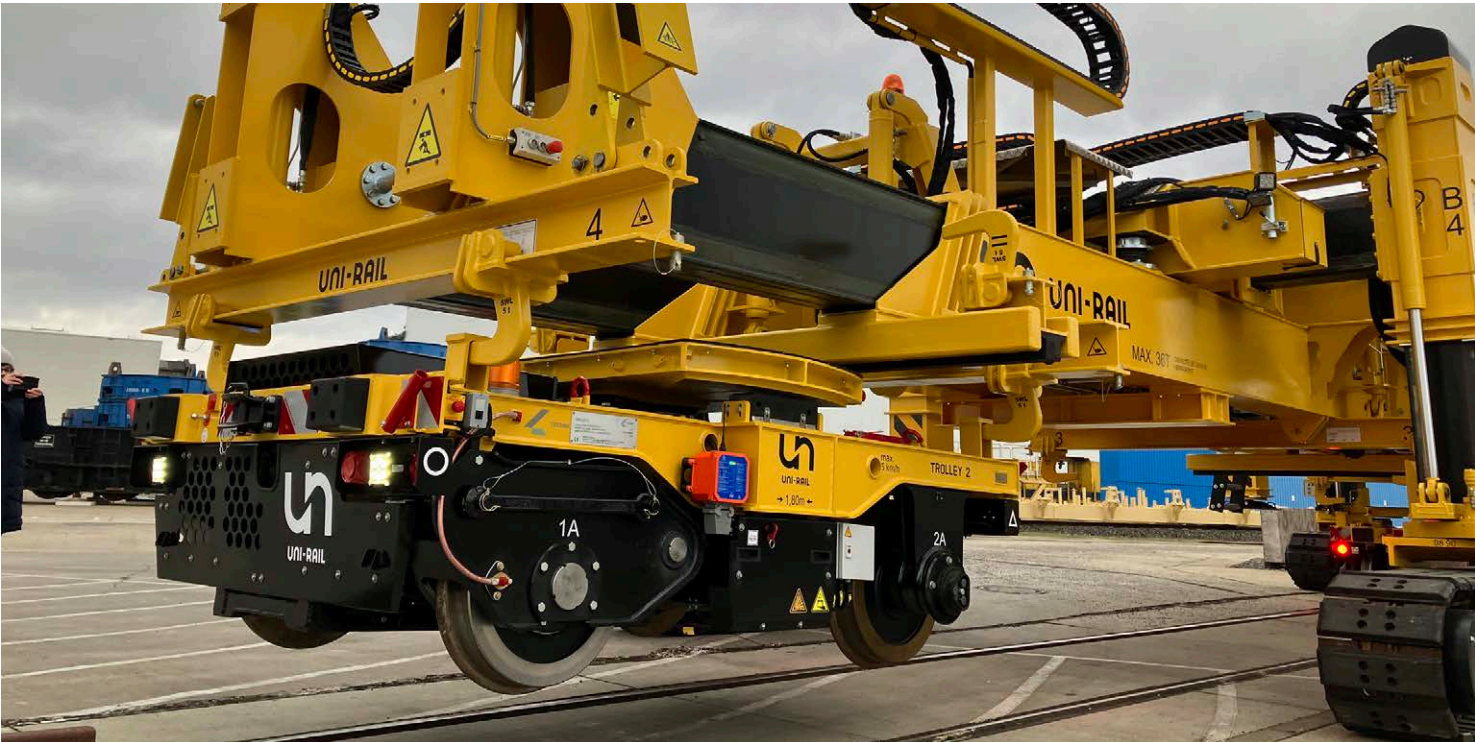
The Tracklayer can be transported by rail or road. It can load and unload itself independently without external lifting equipment on a flat rail car or truck trailer. Only a few minutes are needed from arrival to the start of work. This saves valuable time in tight block times.

The Tracklayer is a tried and tested, reliable machine with a long service life. Tracklayers have been in operation for more than 25 years on five continents.





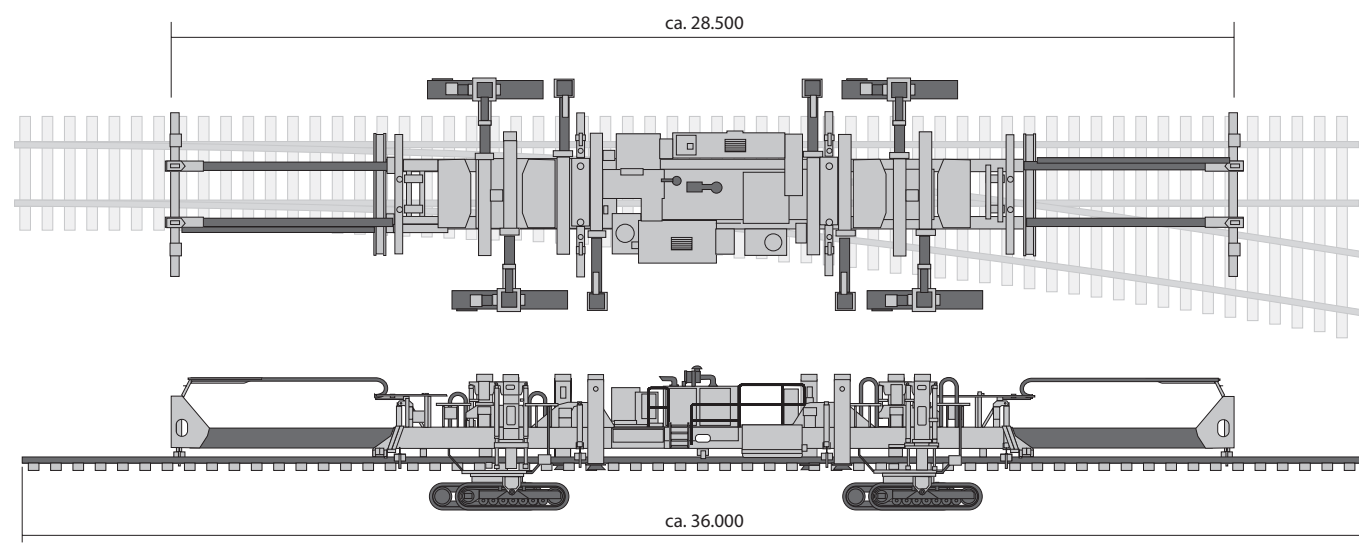




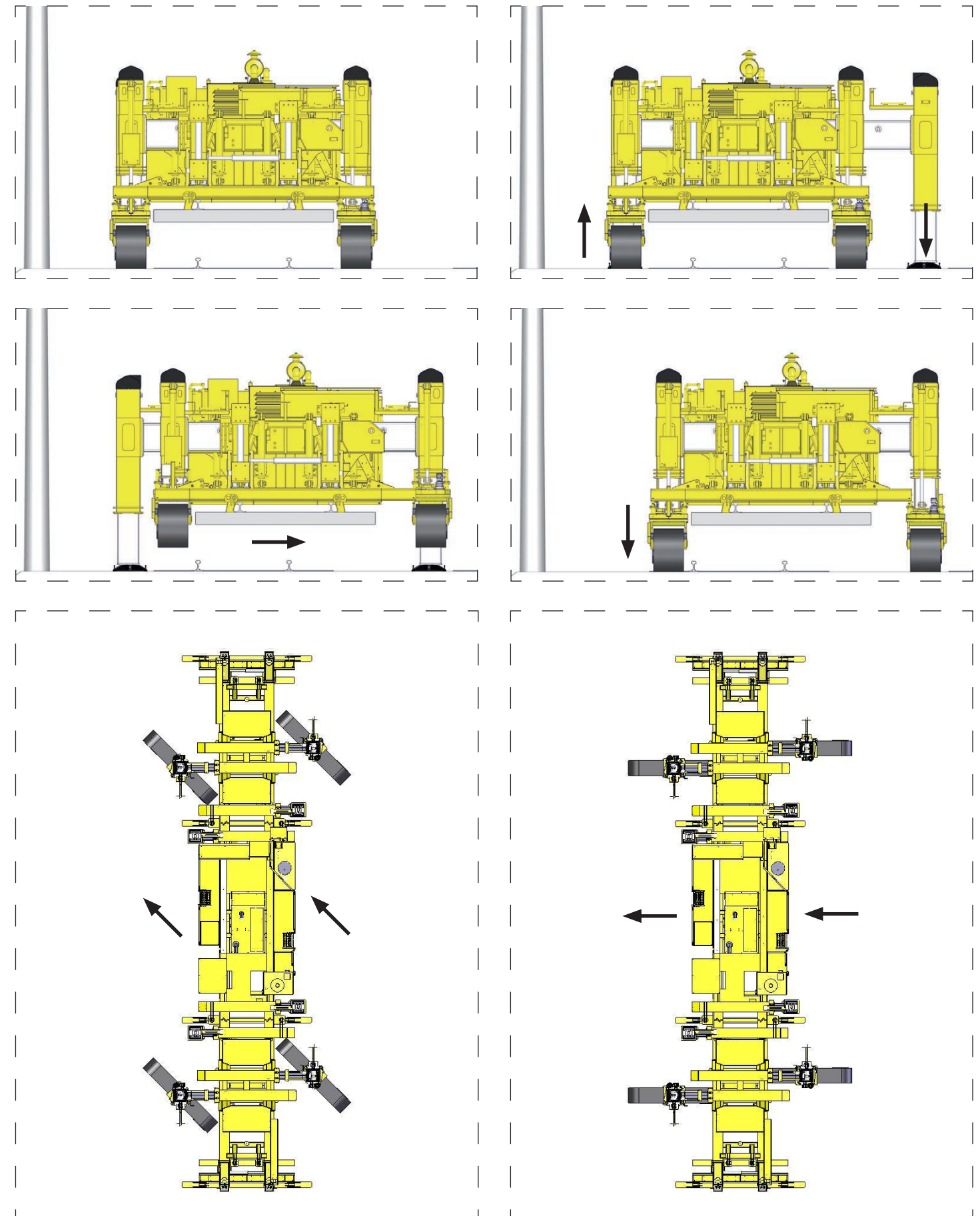


# THE TECHNE TRACKLAYER

Turnable crawler units allow the Tracklayer to move forwards, diagonally and sideways. Additional telescopic support legs allow it to step sideways. All movement maneuvers can be performed without putting down the load.



Even with load attached, the Tracklayer can be moved in any desired direction. By stepping sideways obstacles can be easily driven around.





Thanks to the big lifting height, the switch parts can be unloaded quickly and easily from the switch transport wagon.



Loading onto a railroad wagon or a standard road trailer is quick and uncomplicated without the need for additional lifting equipment.

The loading and unloading operation takes less than 10 minutes.

