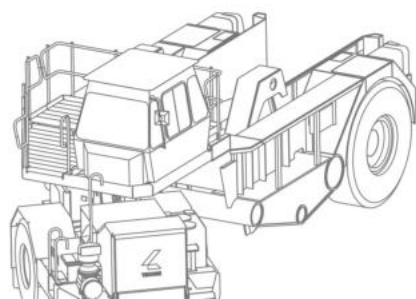
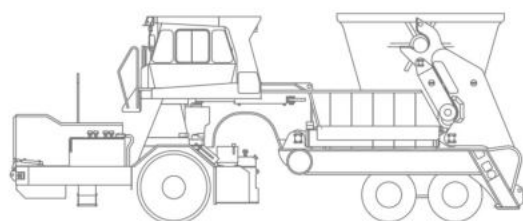
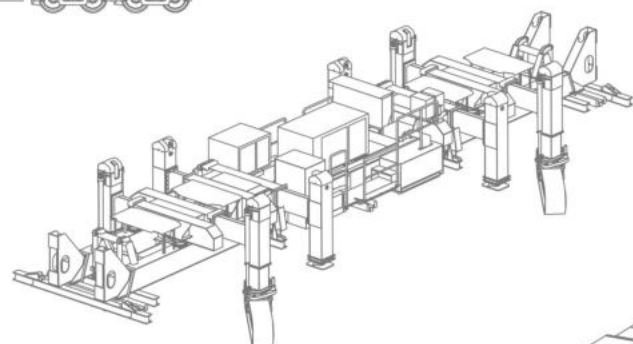
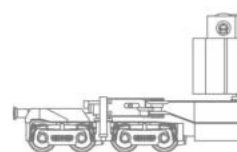
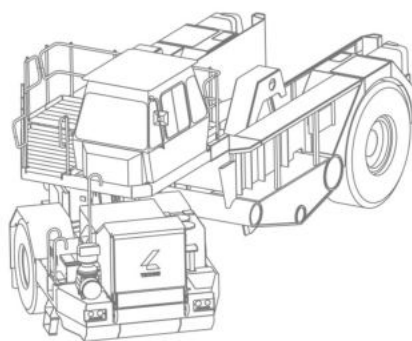
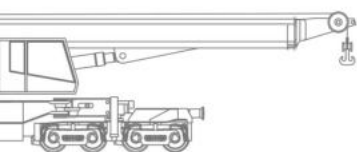
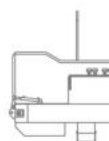
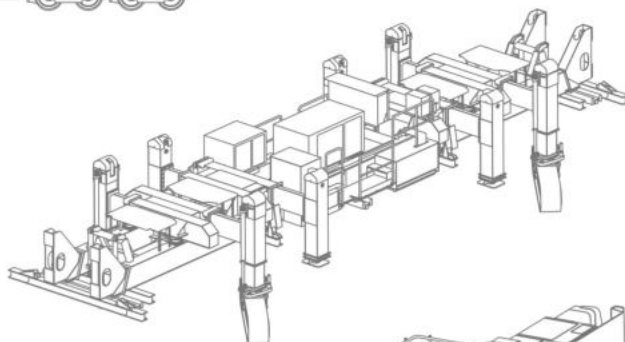
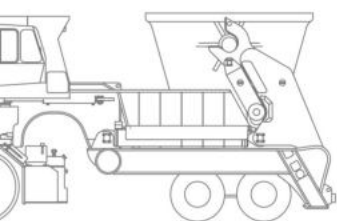
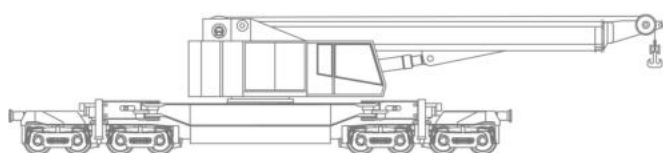
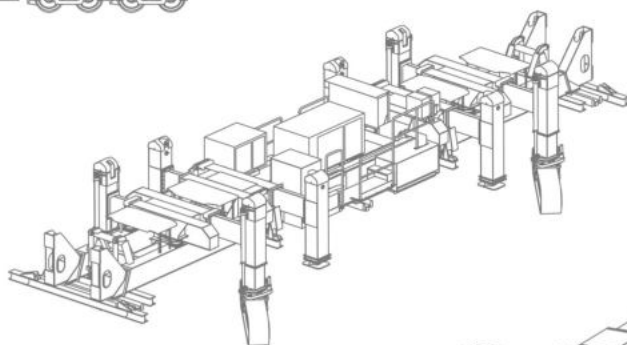
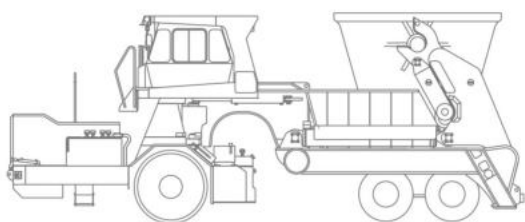
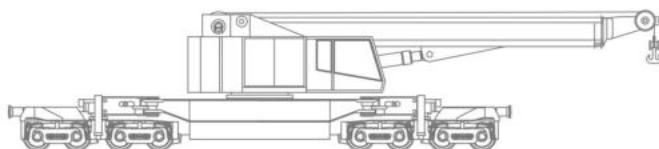
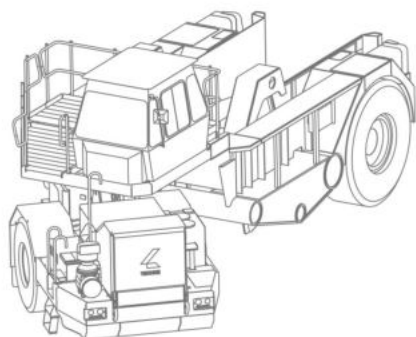


TECHNE





Switch Renewals



Bridge Construction



Recovery Work



TECHNE MULTI TASKER FAMILY

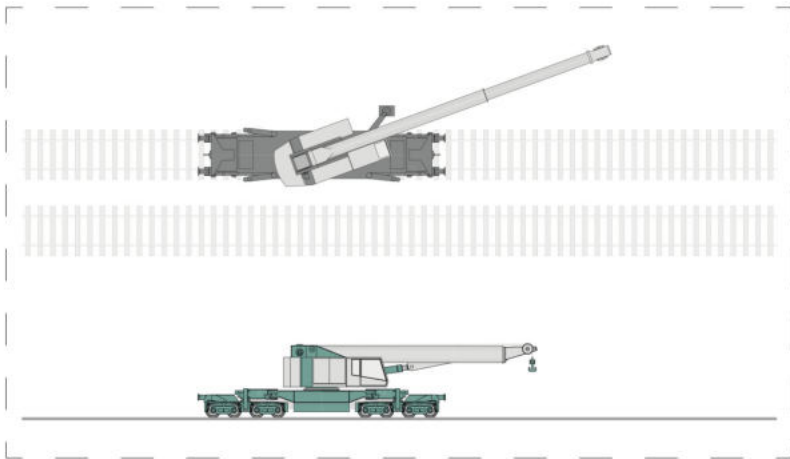
COMPACT

The classic Multi Tasker railway crane with small rear tail radius thanks to a compact counterweight design. There are three basic sizes: M, L, XL

The L and XL size cranes have telescopic counterweights and are also available with counterweight designs that decouple the lateral movement of the counterweight from the turning motion of the boom.

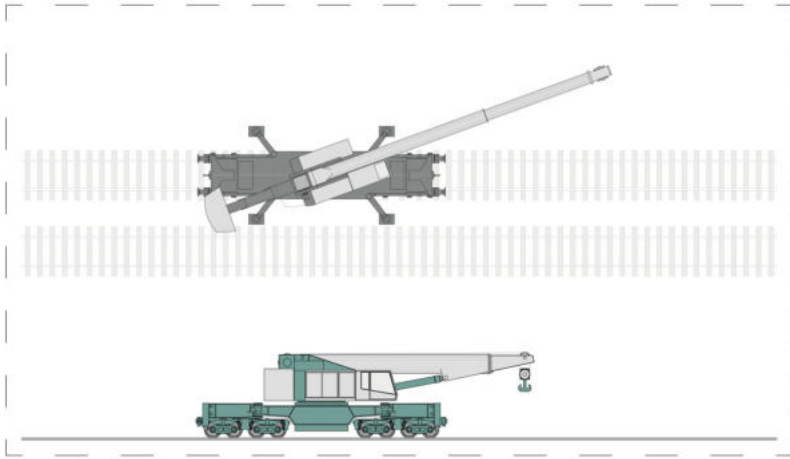
M (60 MT - 500 MT)

Rail handling, panel handling, small switch renewals, general lifting. Also for Metros.



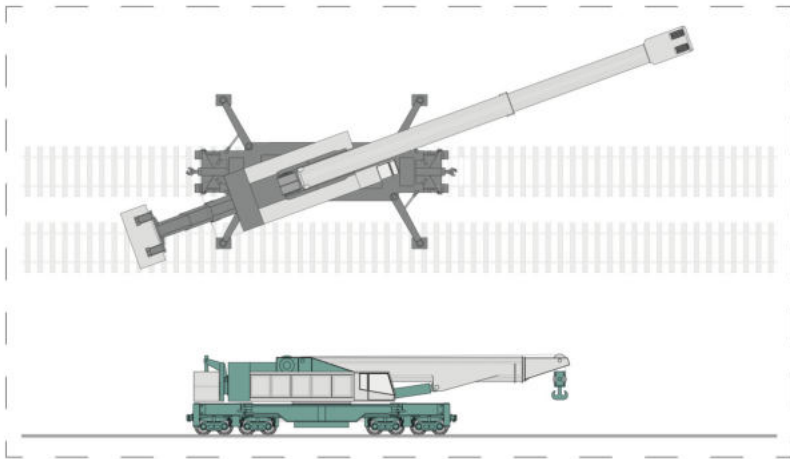
L (500 MT - 1600 MT)

Big switch renewals, bridge work, recovery services, heavy general lifting

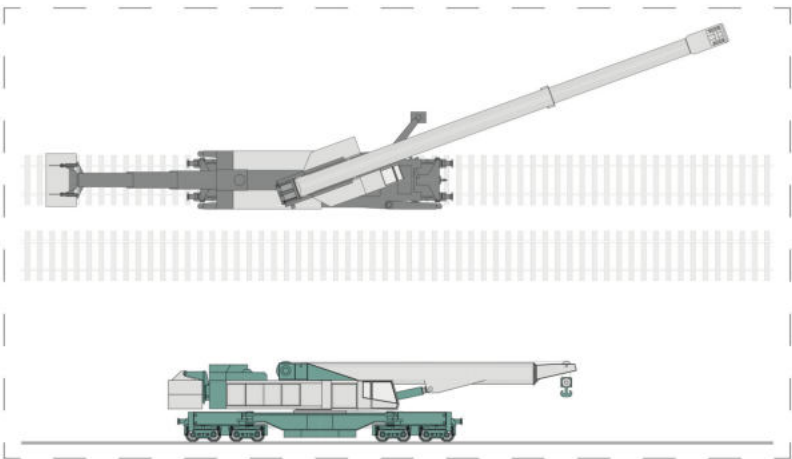


XL (2000+ MT)

Recovery services, bridge work

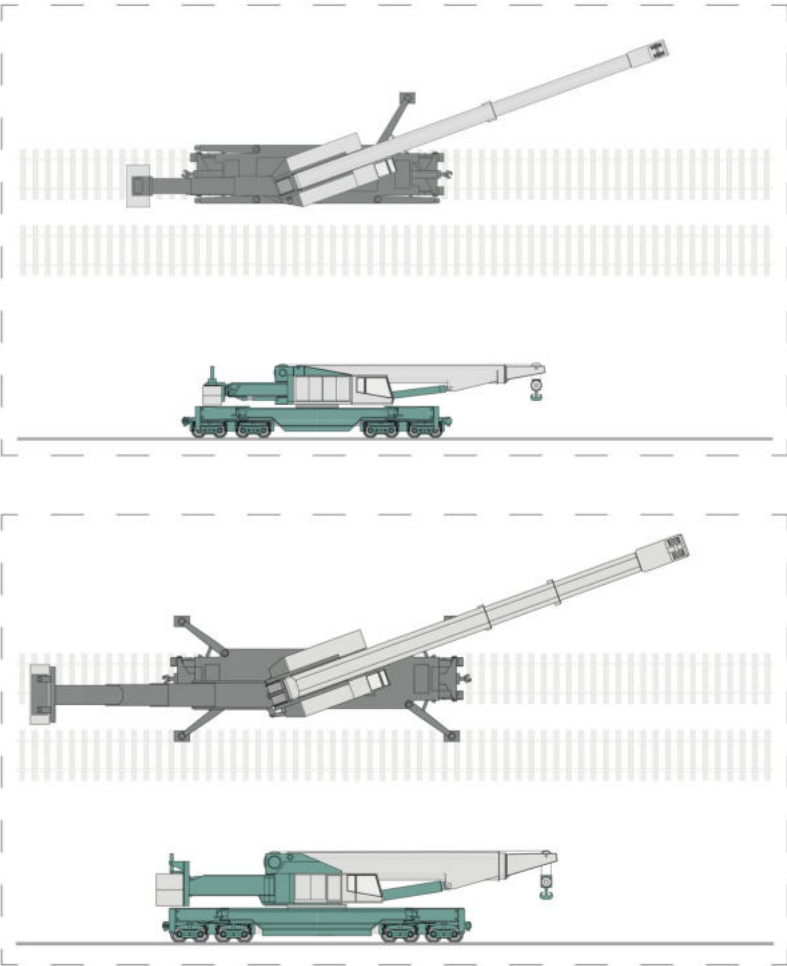


DOUBLE SLEW COUNTERWEIGHT SYSTEM



For even more operational flexibility the L-Size Crane models can be equipped with a double slewing system. This allows the boom to swivel while the counterweight remains in track direction, thus the counterweight does not interfere with the adjacent line and stays clear of tunnel walls, objects in stations or side walls of cuttings. With the counterweight in track direction only one prop needs to be set in most load cases. This makes crane work safer and more efficient.

ARTICULATED COUNTERWEIGHT SYSTEM



The articulated counterweight system moves the counterweight in the same angle as the boom, albeit in the opposite direction. This results in a track parallel movement of the counterweight. With a slim counterweight the counterweight will also stay clear of the adjacent line. The articulated counterweight system is also available for cranes with more than 2000 MT capacity. Our bigger cranes can lift 6-axle locomotives ahead of the coupler.

MULTI TASKER

The TECHNE Multi Tasker railway crane is a machine for all kinds of lifting duties in the railway environment. As it can drive with loads it makes construction sites more efficient and enables planners and builders to install large pre-assembled modules such as switch and bridge sections.

It furthermore works perfectly with switch wagons to accomplish just in time logistics for switch renewals. This ensures the highest level of quality. The Multi Tasker is also a very powerful tool for recovery work.

KEY ADVANTAGES OF THE MULTI TASKER

_it can drive with load on the hook even through elevated curves,

_it turns the boom in restricted spaces such as railway stations, tunnels or cuttings thanks to compact tail radius and special counterweight designs,

_it works highly efficient as the number of props to be set (if any) is minimized.

Just define your main lifting duty requirements and the network the machine will work in and we will configure the perfect Multi Tasker railway crane for you.

